



# LRRFIP1 Monoclonal Antibody

<b>Catalog No</b>	YP-Ab-01045
<b>Isotype</b>	IgG
<b>Reactivity</b>	Human
<b>Applications</b>	WB
<b>Gene Name</b>	LRRFIP1
<b>Protein Name</b>	Leucine-rich repeat flightless-interacting protein 1
<b>Immunogen</b>	Purified recombinant human LRRFIP1 protein fragments expressed in E.coli.
<b>Specificity</b>	LRRFIP1 Monoclonal Antibody detects endogenous levels of LRRFIP1 protein.
<b>Formulation</b>	Purified mouse monoclonal in buffer containing 0.1M Tris-Glycine (pH 7.4, 150 mM NaCl) with 0.2% sodium azide, 50% glycerol.
<b>Source</b>	Monoclonal, Mouse
<b>Purification</b>	Affinity purification
<b>Dilution</b>	Western Blot: 1/1000 - 1/2000. Not yet tested in other applications.
<b>Concentration</b>	1 mg/ml
<b>Purity</b>	≥90%
<b>Storage Stability</b>	-20°C/1 year
<b>Synonyms</b>	LRRFIP1; GCF2; TRIP; Leucine-rich repeat flightless-interacting protein 1; LRR FLII-interacting protein 1; GC-binding factor 2; TAR RNA-interacting protein
<b>Observed Band</b>	
<b>Cell Pathway</b>	Nucleus. Cytoplasm.
<b>Tissue Specificity</b>	Ubiquitously expressed.
<b>Function</b>	developmental stage:Widely expressed in fetal tissues.,function:Transcriptional repressor which preferentially binds to the GC-rich consensus sequence (5'-AGCCCCCGGCG-3') and may regulate expression of TNF, EGFR and PDGFA. May control smooth muscle cells proliferation following artery injury through PDGFA repression. May also bind double-stranded RNA.,sequence caution:Contaminating sequence. Potential poly-A sequence.,similarity:Belongs to the LRRFIP family.,subunit:Interacts with FLII.,tissue specificity:Ubiquitously expressed.,
<b>Background</b>	developmental stage:Widely expressed in fetal tissues.,function:Transcriptional repressor which preferentially binds to the GC-rich consensus sequence (5'-AGCCCCCGGCG-3') and may regulate expression of TNF, EGFR and PDGFA. May control smooth muscle cells proliferation following artery injury through PDGFA repression. May also bind double-stranded RNA.,sequence caution:Contaminating sequence. Potential poly-A sequence.,similarity:Belongs to the LRRFIP family.,subunit:Interacts with FLII.,tissue specificity:Ubiquitously



expressed.,

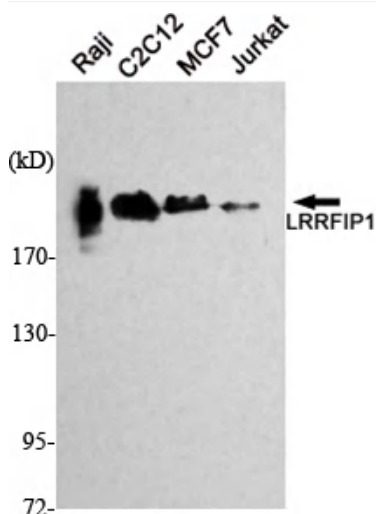
**matters needing attention**

Avoid repeated freezing and thawing!

**Usage suggestions**

This product can be used in immunological reaction related experiments. For more information, please consult technical personnel.

**Products Images**



Western Blot analysis using LRRFIP1 Monoclonal Antibody against Raji, C2C12, MCF7, Jurkat cell lysate.